

# community hubs initiative

WHERE COMMUNITY HAPPENS



## What is a Community Hub?

Community Hubs are welcoming and inclusive spaces where residents build connections, access supports and services and work together to identify and respond to community needs, all of which contribute to stronger neighbourhoods.

## How many community hubs are there in Calgary?

There are currently five Community Hubs under the Community Hubs Initiative. They operate out of six spaces located in Bowness, Sunalta, Martindale, Pineridge and Forest Lawn. They all serve several different communities and operate differently to respond to community needs. There are many different types of hubs within the city of Calgary in addition to the sites in the Community Hubs Initiative.

## What makes the Community Hubs Initiative unique?

Each Hub site is unique, just like the community it serves. What is consistent across the sites is that they are intentionally working to activate the four key features.

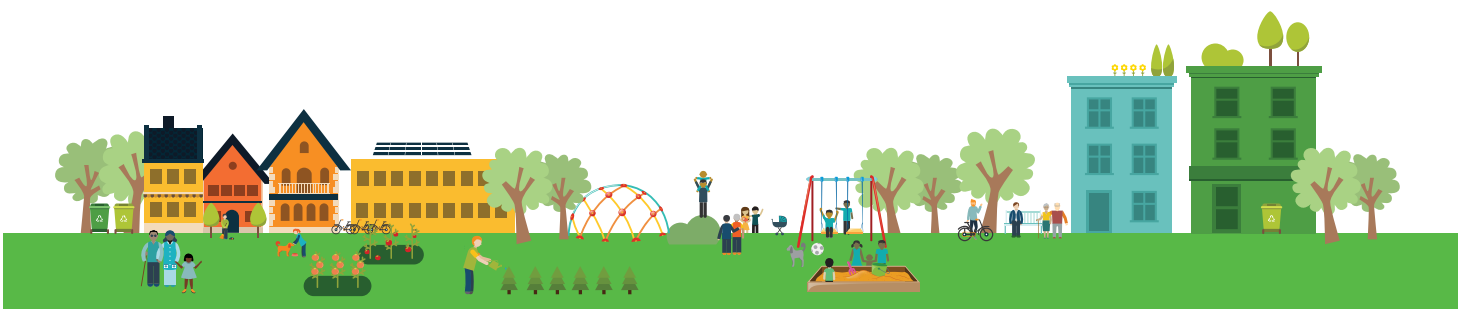
The Community Hubs Initiative creates opportunities for connections and fosters relationships with residents, community groups, services providers, agencies, levels of government, corporate and philanthropic partners, donors, and so much more.

## Who are Hub Site Leads and Community Social Workers?

People are at the heart: community hubs are more than just spaces – they are filled with people dedicated to working with residents to identify social needs, bring to light community assets and create opportunities for connections. Community Social Workers and Hub Site Leads focus, among many things, on providing important information on supports and services and creating and nurturing positive relationships in the community.

## Who are Community Connectors?

Community Connectors are community leaders who engage and connect with their neighbours and stakeholders to learn about their community and identify interests, needs and assets to strengthen their neighbourhoods. Individual Hub Sites tailor these roles to meet the unique needs of their catchment area & work. The Community Connector model helps cultivate resident capacity for community leadership roles, future employment opportunities and the ability for those experiencing financial barriers to participate in community life.



## What is the relationship between the Calgary Poverty Reduction Initiative (CPRI), the Enough for All strategy and Community Hubs?

In 2011, The City and United Way jointly created the Calgary Poverty Reduction Initiative to address the reality that 1 in 10 Calgarians live in poverty. Emerging from these consultations, the Enough for All strategy was launched. Enough For All has the following goals and the Community Hubs Initiative directly supports the accomplishment of these goals:

- All Calgary communities are strong, supportive and inclusive.
- Everyone in Calgary has the income and assets needed to thrive.
- Everyone in Calgary can easily access the right supports, services and resources.
- All Indigenous people are equal participants in Calgary's prosperous future.

## What does social inclusion mean?

Neighbourhoods are stronger when everyone has supports and opportunities be included. Through building relationships and working together, Community Hubs create opportunities for social inclusion and ensure that people who have often been excluded from community life are supported to participate, volunteer, and take on leadership roles in their neighbourhood.

## What is economic participation?

A person's engagement in work or education, and their access to economic resources from that engagement. Increasing economic participation is an important way to increase social inclusion. Community Hubs help remove financial barriers to participation and support community activities that will help keep money in people's pockets.

## How is the Community Hubs Initiative sustainable?

Sustainability is a key part of this Initiative. Community Hubs are long-term community change initiatives and will evolve as communities evolve. Throughout the Community Hubs initiative, The City and United Way will empower residents, co-located partners and other partner agencies, and community groups to grow, maintain and sustain Hub operations throughout each investment period. Three resource streams will ensure the sustainability of the Hubs:

- Enhanced United Way and City of Calgary resources and supports
- Grant and sponsorship opportunities from other funders and corporations
- New revenue generating opportunities within Hubs, such as social enterprise and facility rentals

## How can I engage with Community Hubs?

You can visit Community Hubs at the locations posted above, and if you live in a Hub neighbourhood, be sure to subscribe to Hub newsletters via their websites to be in the know of what is happening at the Hub. For potential donors and corporate or philanthropic partner opportunities, please contact Heather Innes, Manager, Strategic Giving at [heather.innes@calgaryunitedway.org](mailto:heather.innes@calgaryunitedway.org). For educational resources about community hubs, please refer to the Resource Library. For more information about the Initiative in general, please see our contact section at the bottom of the page.

